

OVERBURY ENTERPRISES



Conderton Chase

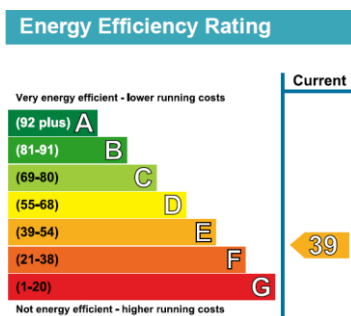
£3250 pcm

Available Autumn 2018

An elegant family home set in mature gardens with outbuildings in the rural hamlet of Conderton with beautiful views across the Cotswolds. The house has beautifully proportioned spacious light rooms which are great for entertaining, and excellent access onto Bredon Hill for walks in the country followed by lunch at the local pub only a stone's throw away.

Kitchen with Aga, 4 Reception Rooms, 5/6 Bedrooms, 3 Bathrooms,
Laundry / Boot Room, Outbuildings & Garage

We offer residential and commercial tenants the opportunity to be part of a vibrant rural community making Conderton and the surrounding villages a great place to live and work.



VIEWING - Strictly by appointment

THE ESTATE OFFICE, OVERBURY, TEWKESBURY GL20 7NR

Telephone: 01386 725111 Facsimile: 01386 25678

Email: lettings@overburyenterprises.co.uk www.overburyenterprises.co.uk



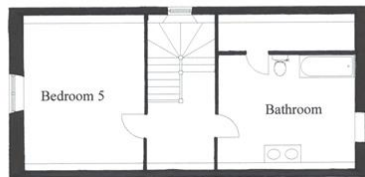
NOT TO SCALE



Conderton Chase
Ground Floor &
Cellar



NOT TO SCALE



Conderton Chase
First Floor &
Attic

